

CARVE CLASSIC

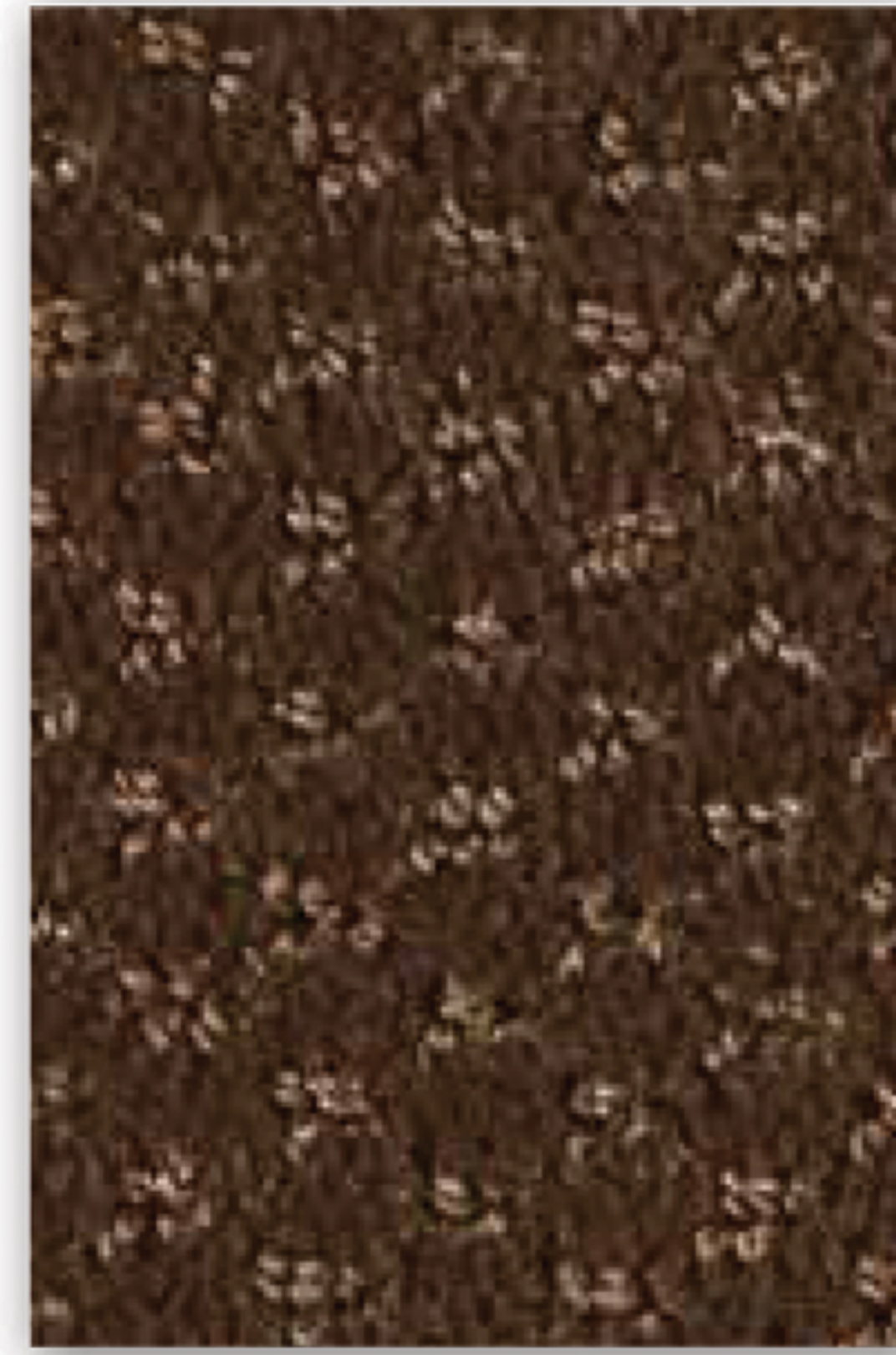
lano carpets



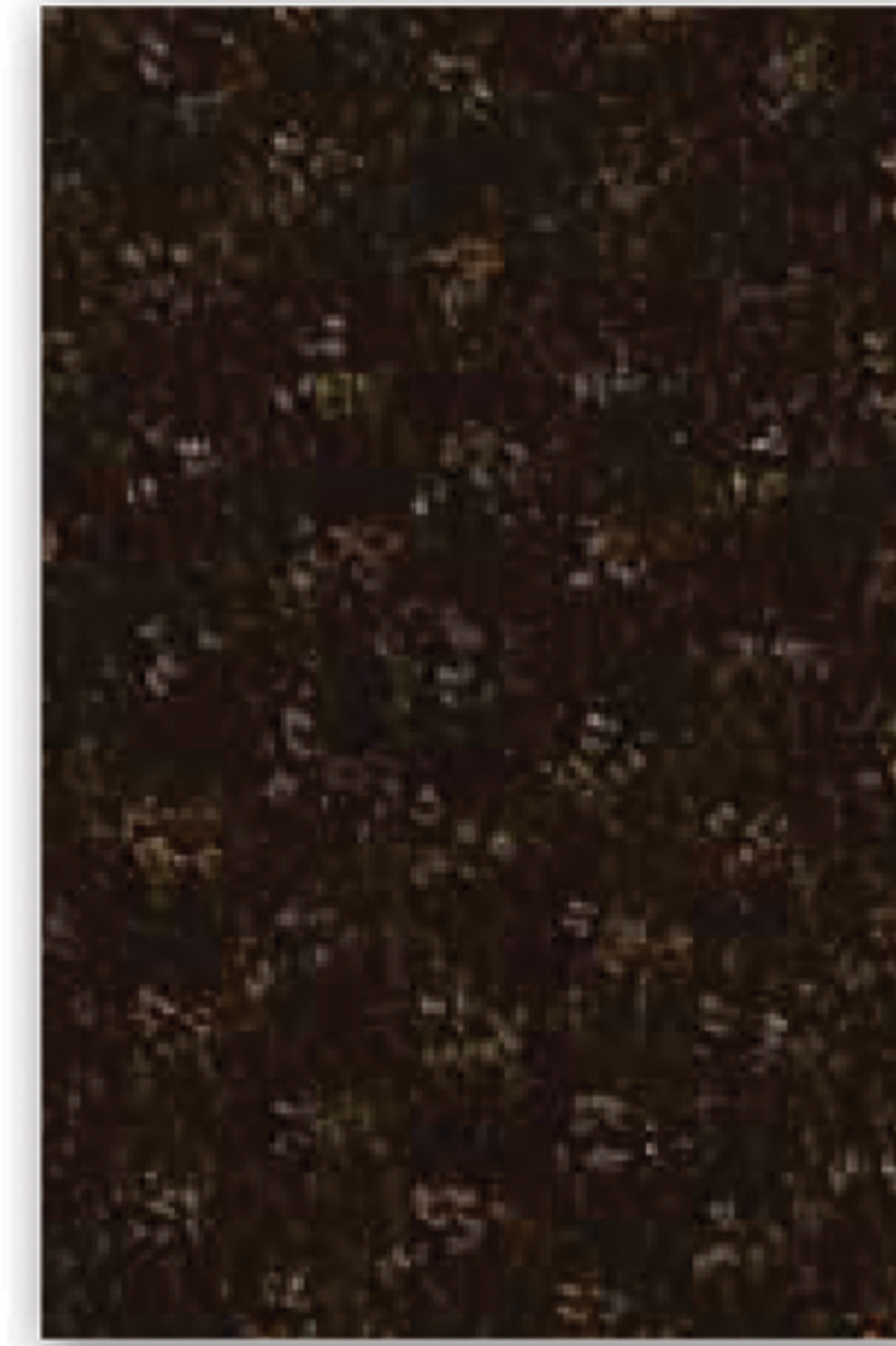
CFA.251



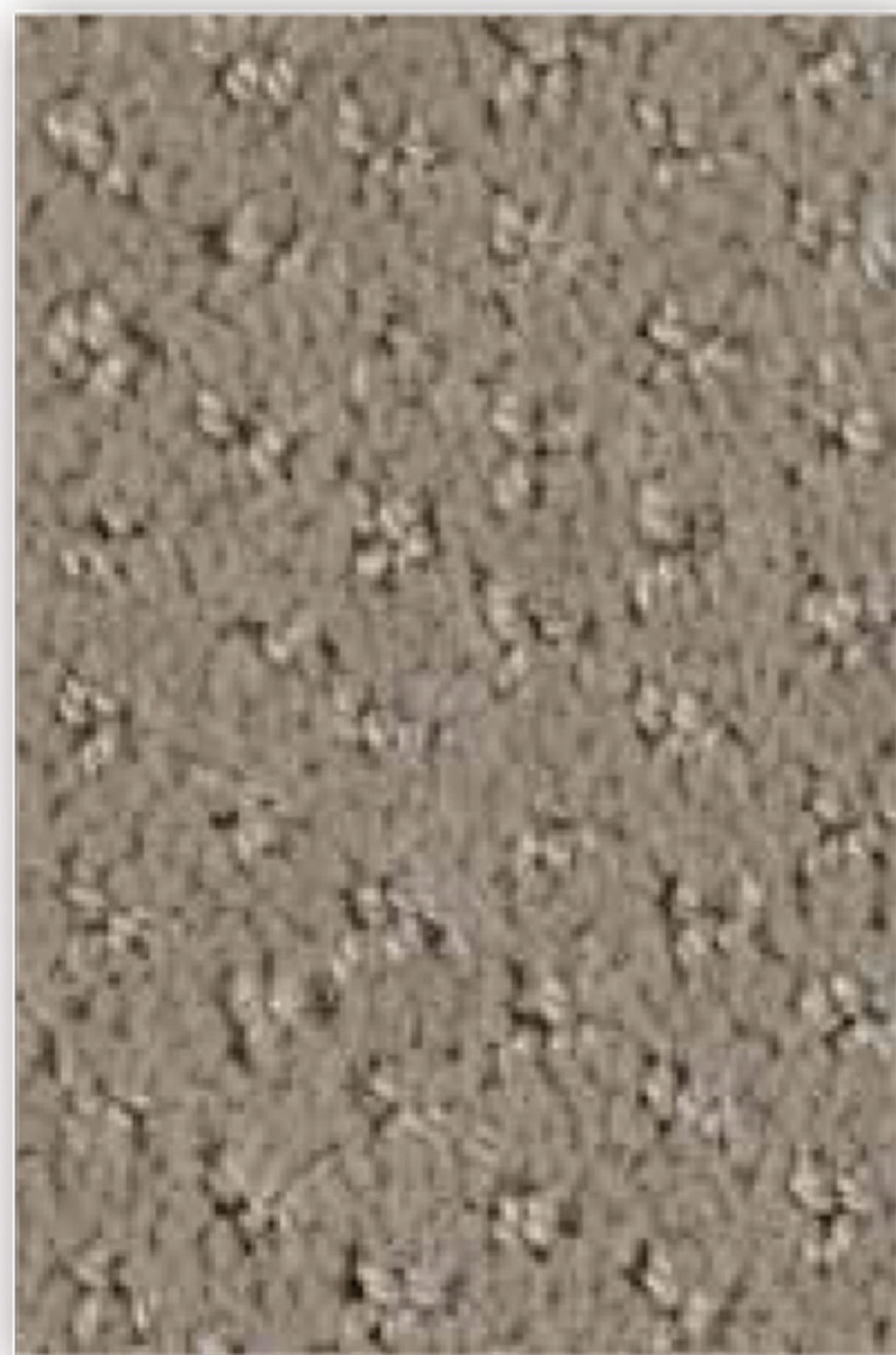
CFA.261



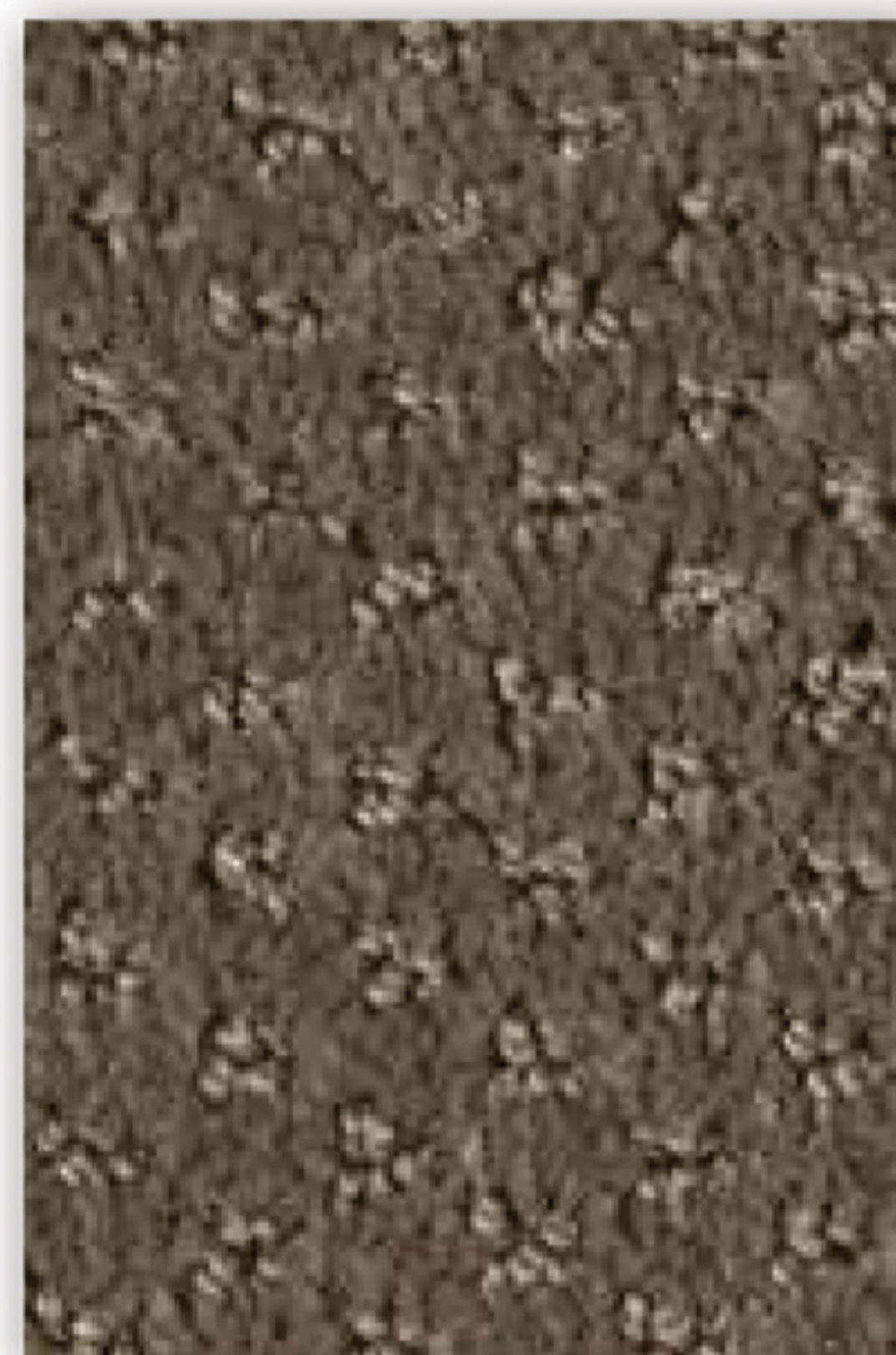
CFA.280



CFA.291



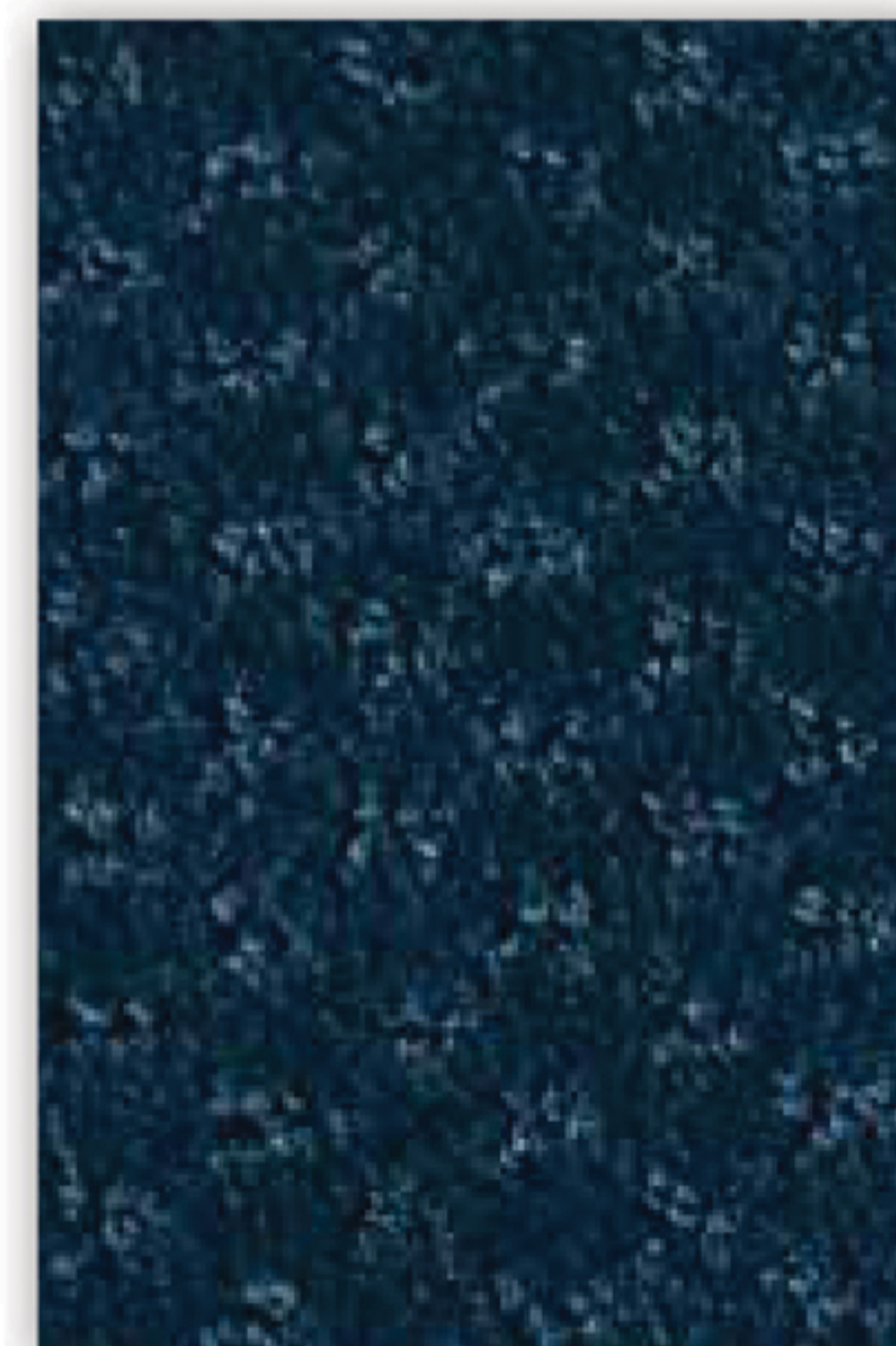
CFA.431



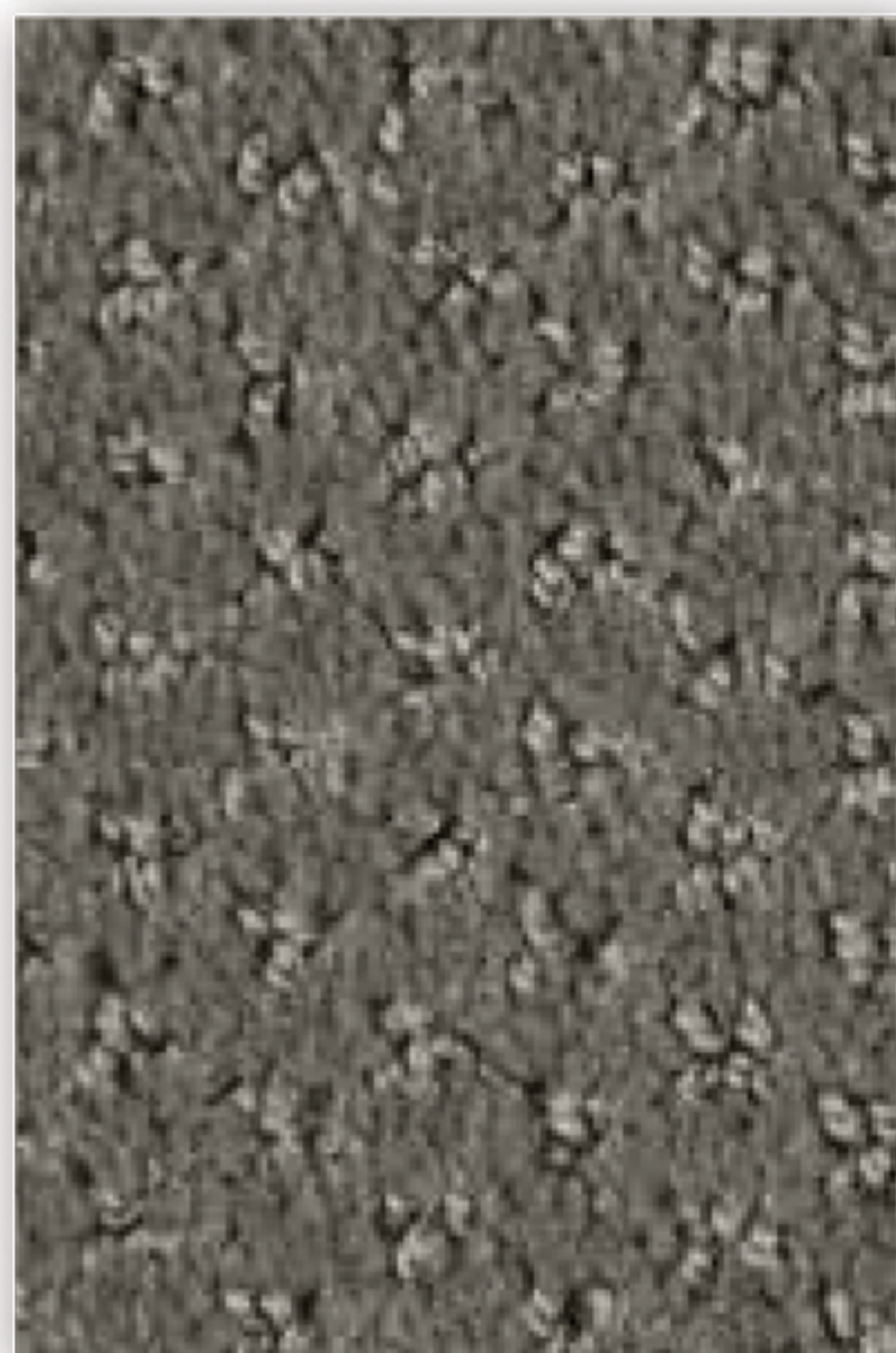
CFA.420



CFA.410



CFA.790



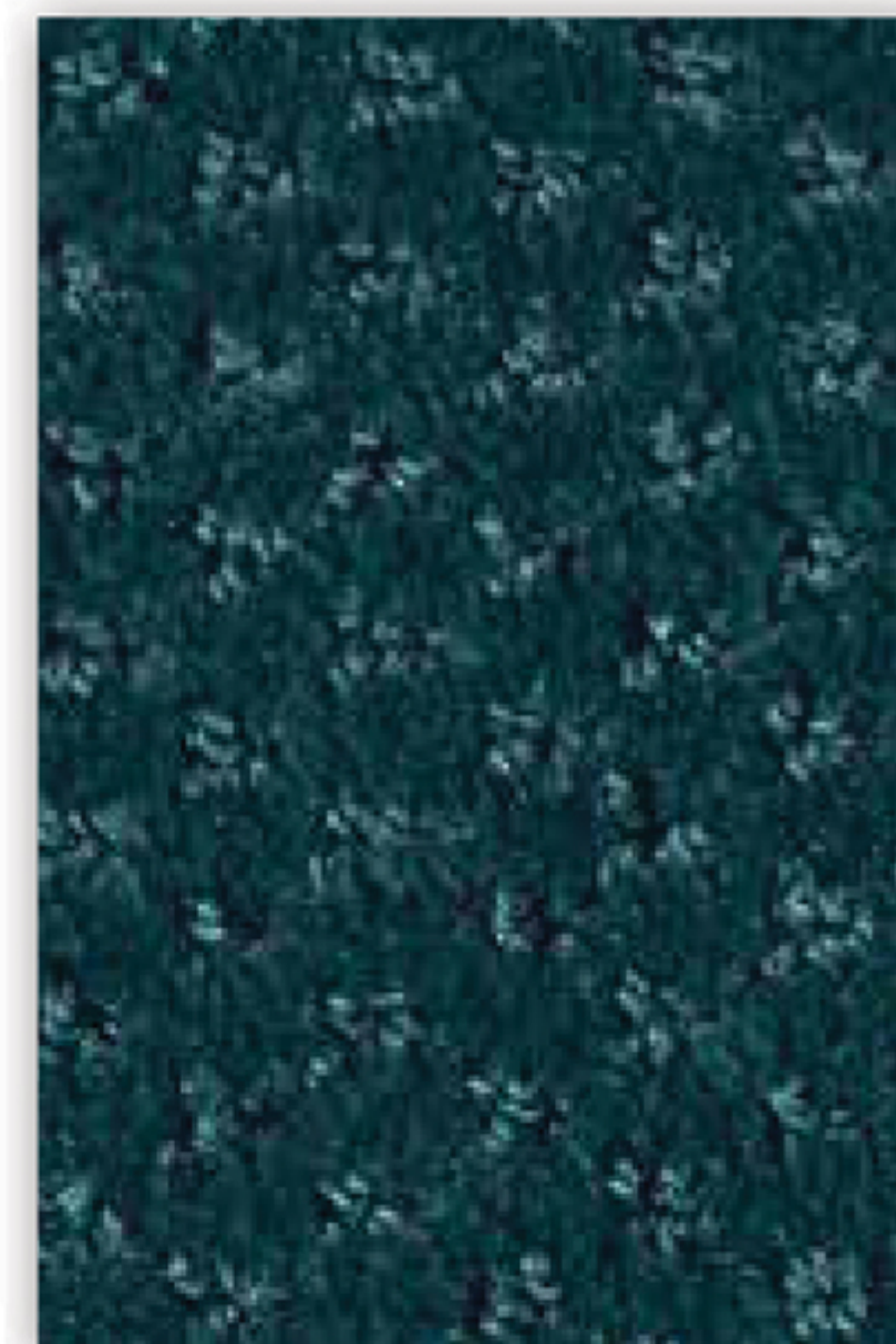
CFA.840



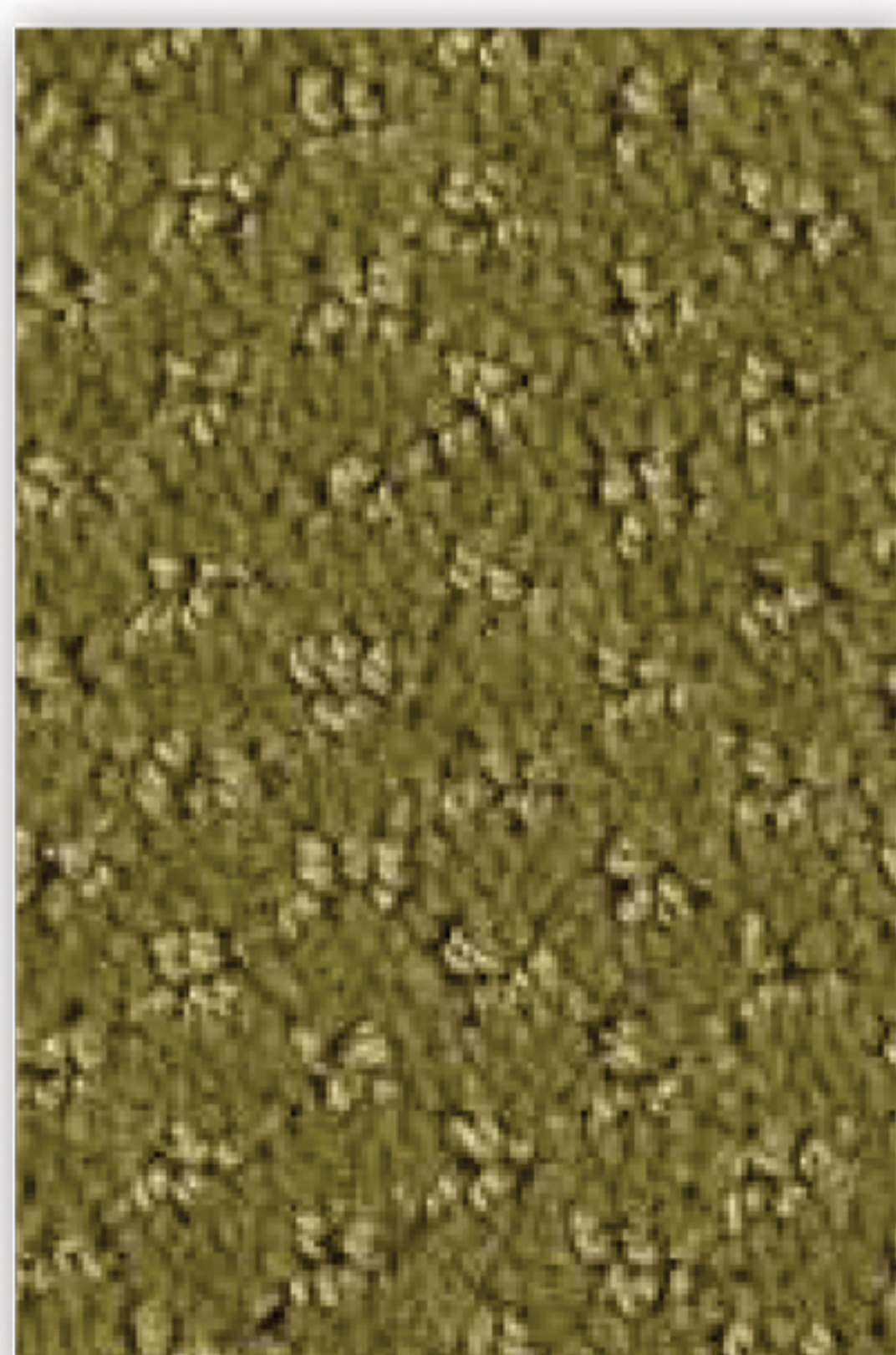
CFA.821



CFA.810



CFA.710



CFA.530



CFA.310



CFA.100



CFA.120

CARVE CLASSIC

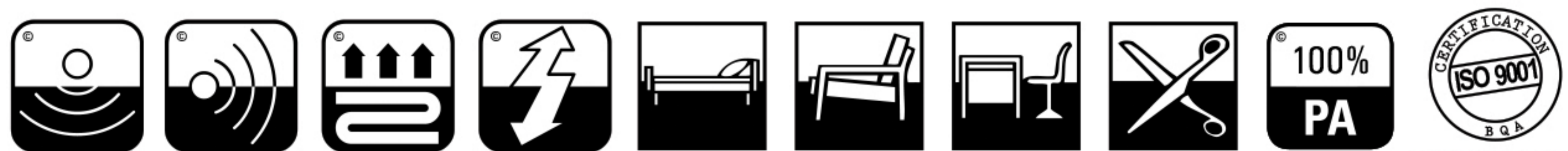
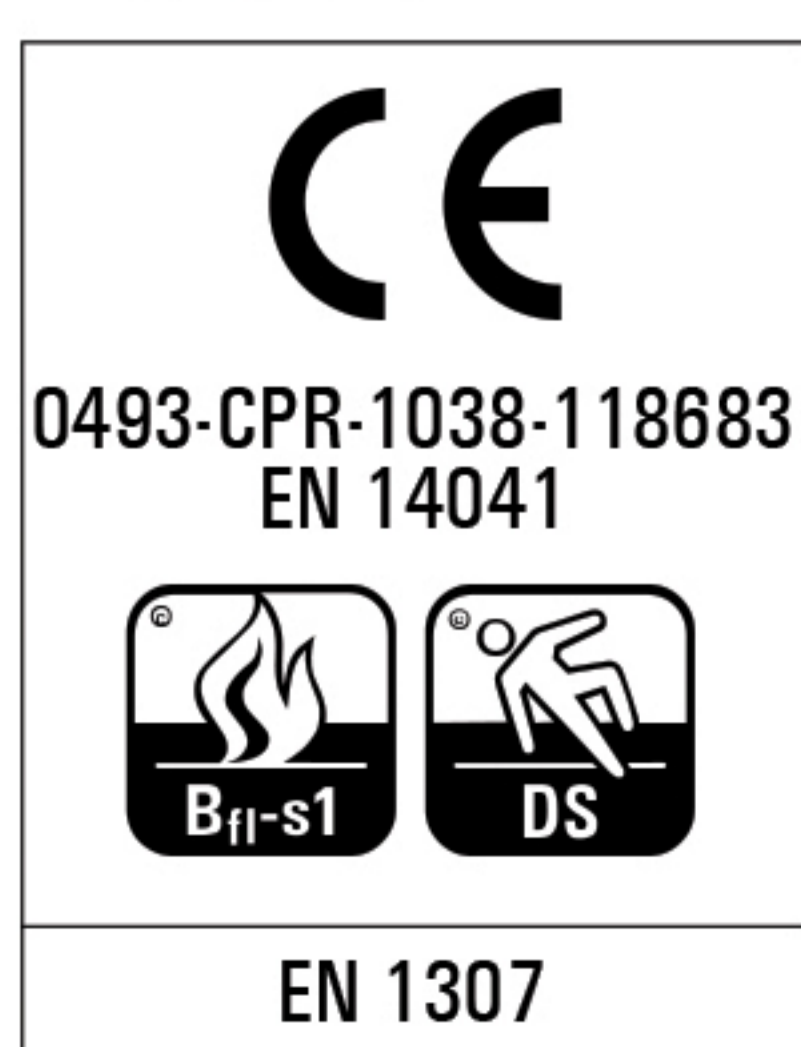
lano carpets



Fabricagemethode Technique de fabrication Manufacturing process Herstellungsart Tecnica di fabbricazione	tufted, 1/10" cut loop	Poolsamenstelling Nature du velours Pile composition Polmaterial Composizione felpa	PA	Tuftdoek Premier dossier Primary backing Trägermaterial Tela di supporto	non woven	Rugtype Envers Secondary backing Rücken Sottofondo	FBP
Totale dikte Hauteur totale Total height Gesamthöhe Spessore totale	± 10,0 mm	Nuttige poolhoogte Hauteur de velours utile Effective pile height Tatsächliche Florhöhe Spessore felpa utile	± 6,0 mm	Breedte Largeur Width Breite Altezza	± 400 cm	Aantal noppen/m ² Nombre de points/m ² Number of knots/sqm Noppenzahl/m ² Numero di punti/mq	± 204880
Poolinzetgewicht/m ² Poids mis en oeuvre/m ² Pile weight/sqm Poleinsatzgewicht/m ² Peso felpa/mq	± 1180 gr	Totaal gewicht/m ² Poids total/m ² Total weight/sqm Poleinsatzgewicht/m ² Peso felpa/mq	± 2540 gr	EN 13501-1 Brandgedrag Comportement au feu Fire behaviour Brennverhalten Reazione al fuoco	B_{fl}-s1	EN 1307 Classificatie Classification Classification Klassifizierung Classificazione	Class 23 Domestic Heavy Class 32 Commercial General
ISO 140/8 Contactgeluidisolatie Isolation aux bruits d'impact Impact sound insulation Trittschallverbesserungsmaß Miglioramento acustico	± 31 dB	ISO 354 Geluidsdempingsvermogen α_s Absorption phonique α_s Sound absorption α_s Schallabsorptionsgrad α_s Grado d'assorbimento acustico α_s	± 0,32 1000 Hz	ISO 11654 Geluidsdempingsvermogen α_w Absorption phonique α_w Sound absorption α_w Schallabsorptionsgrad α_w Grado d'assorbimento acustico α_w	± 0,35	DIN 52612 Warmtedoorlaatweerstand Résistivité thermique Thermal retention Wärmedurchlaßwiderstand Resistenza termica	± 0,147 m²/kW
TOG rating	± 1,47	ISO 6356 2000 Teil 2: Permanent antistatisch Antistatique permanente Permanently antistatic Permanent antistatisch Antistatico permanente	< 2 kV	ISO 6356 2000 Teil 6: Oppervlakteweerstand RoT Résistance horizontale RoT Surface resistance RoT Oberflächenwiderstand RoT Resistenza in superficie Rot	≤ 10¹¹ Ω	ISO 10965 1999 Teil 6: Doorgangsweerstand RdT Résistance transversale RdT Vertical resistance RdT Durchgangswiderstand RdT Resistenza ai passaggi RdT	≤ 10¹⁰ Ω
ISO 105 B02 Lichtechtheid Solidité à la lumière Lightfastness Lichtechtheid Solidità colori alla luce	≥ 5	ISO 105 E01 Watrechtheid verkleuring Solidité à l'eau changement couleur Waterfastness change in colour Wasserechtheit Änderung der Farbe Solidità colori all'acqua cambio colore	≥ 3-4	ISO 105 E01 Watrechtheid uitbloeding Solidité à l'eau dégorgeement Waterfastness staining Wasserechtheit anbluten Solidità colori all'acqua sfumatura colore	≥ 3-4	ISO 105 X12 Wrijftechtheid droog Solidité au frottement sec Rubbingfastness dry Reibungechtheit trocken Solidità colori allo sfregamento a secco	≥ 3-4
ISO 105 X12 Wrijftechtheid nat Solidité au frottement humide Rubbingfastness wet Reibungechtheit nass Solidità colori allo sfregamento umido	≥ 3	Ce produit s'inscrit dans la démarche HQE (F.D.E.S. selon la norme NF P01-10 disponible sur demande). F.D.E.S. = fiche de données environnementales et sanitaires.	HQE	(±) These details are approximate. Complete specification details and associated certificates together with tolerances applying to the above can be provided upon request. We reserve the right to improve technical specifications without prior notice. Due to method of manufacture perfect pattern and/or colour matching cannot be guaranteed. In cut-pile carpeting, in rare cases, shading/pile reversal may occur without affecting its fitness for use. Shading/pile reversal can not be considered as a manufacturing or a material defect and will not affect the durability of the carpet. For other languages see: www.lano.com			



U₃P₃E₁C₀ 11/279



BQA_QM5019_C_199460