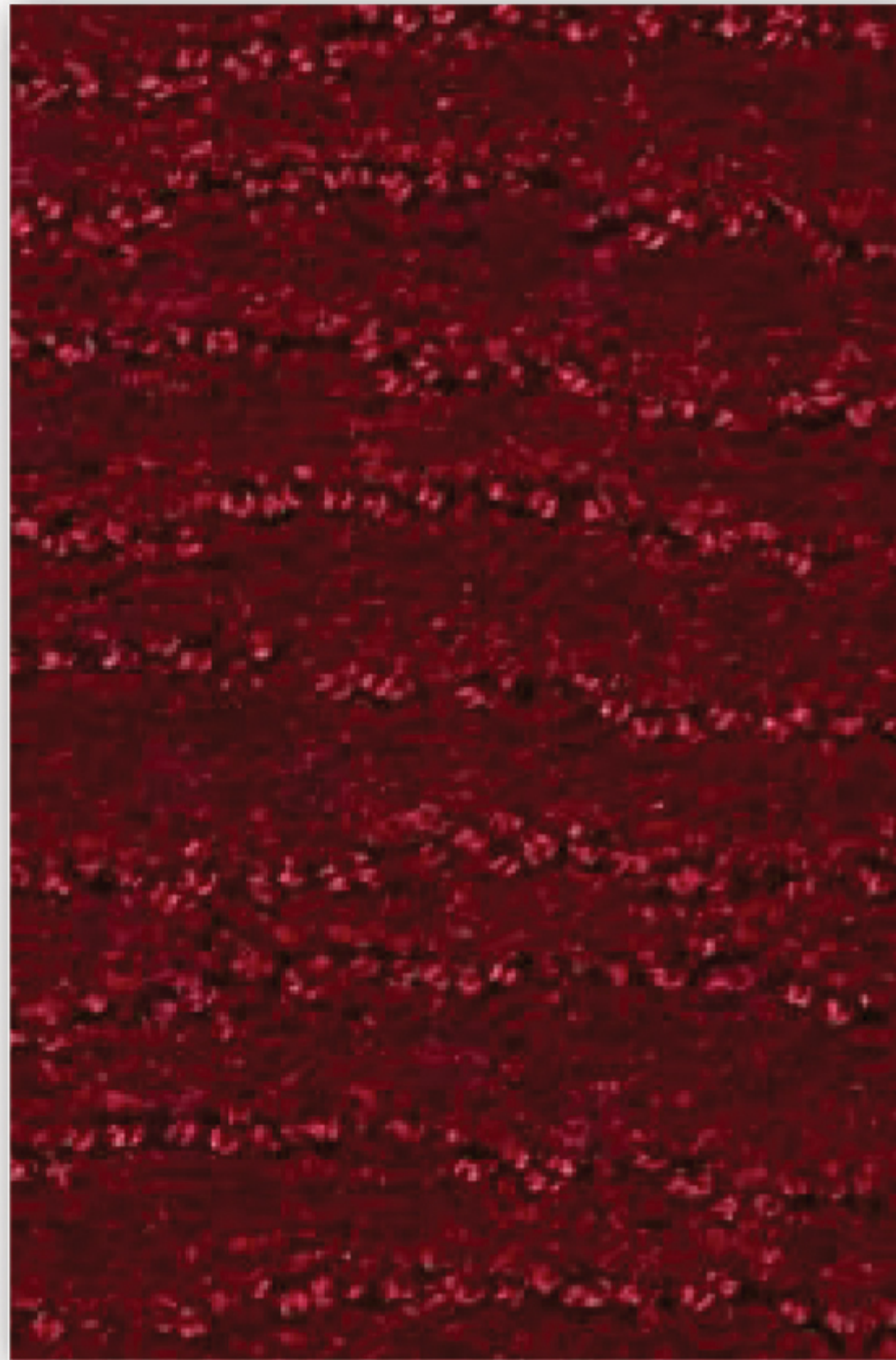
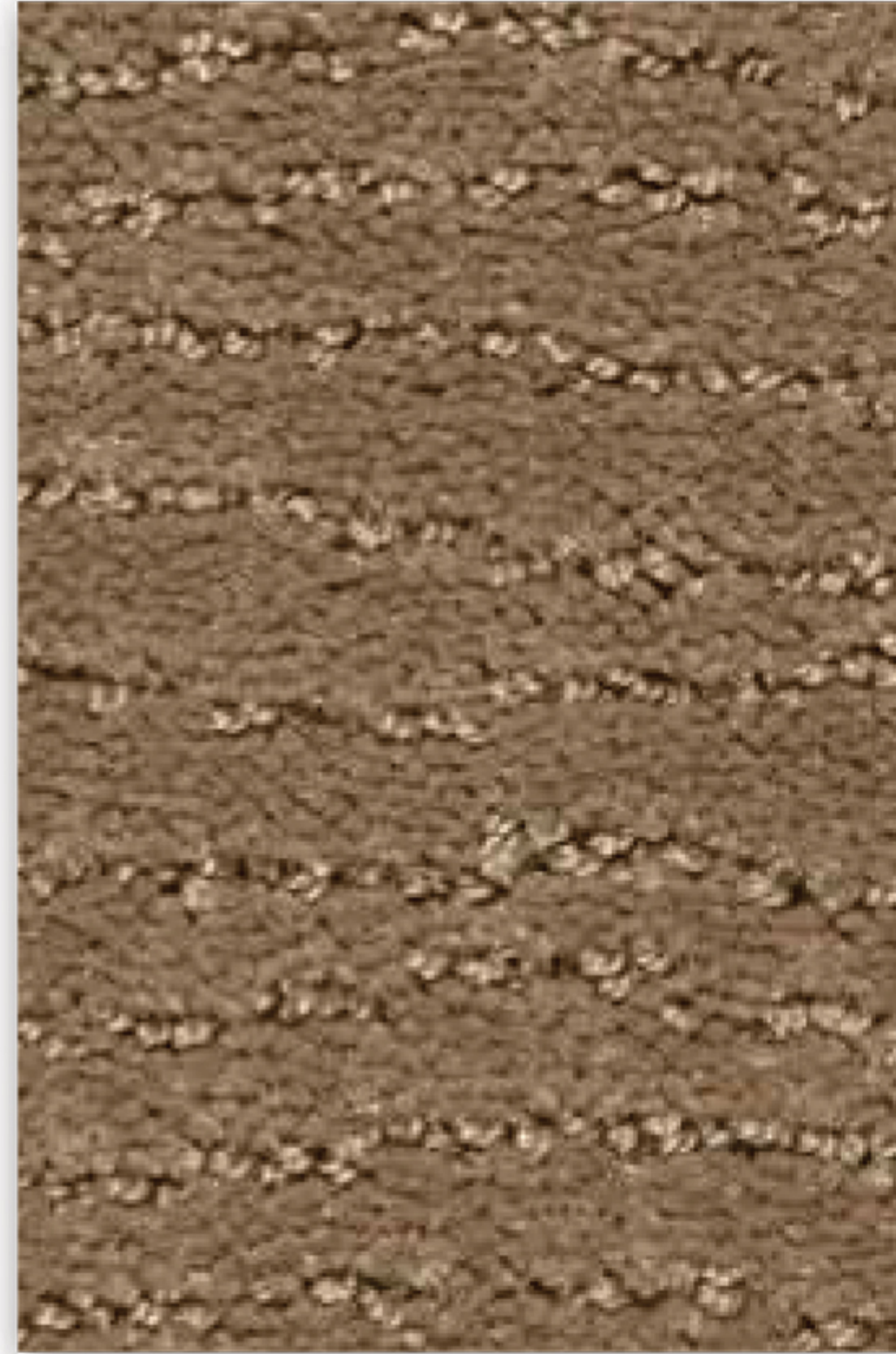


# CARVE COAST

lano carpets



CFC.100



CFC.261



CFC.251



CFC.291



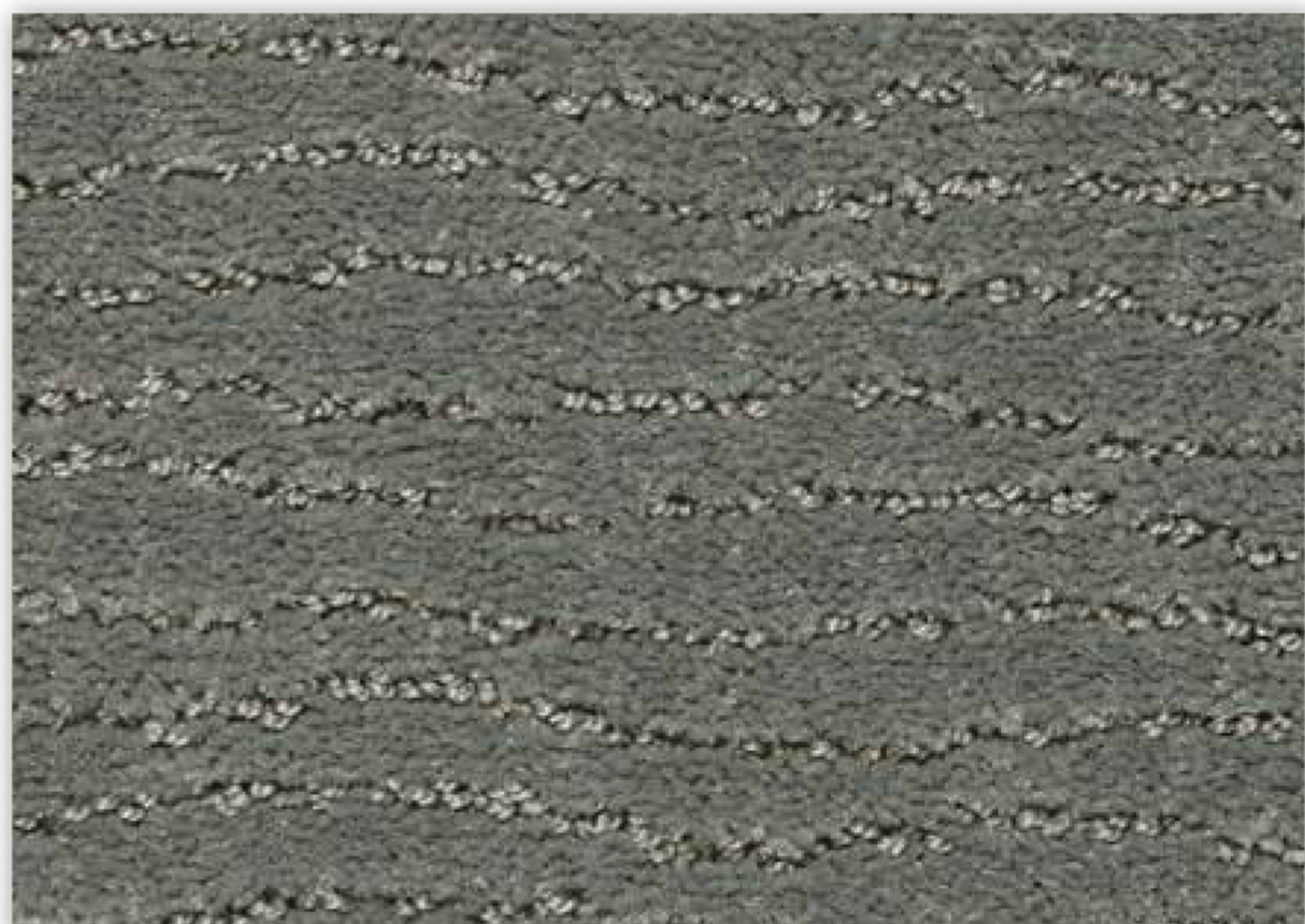
CFC.410



CFC.431



CFC.821



CFC.840

# CARVE COAST

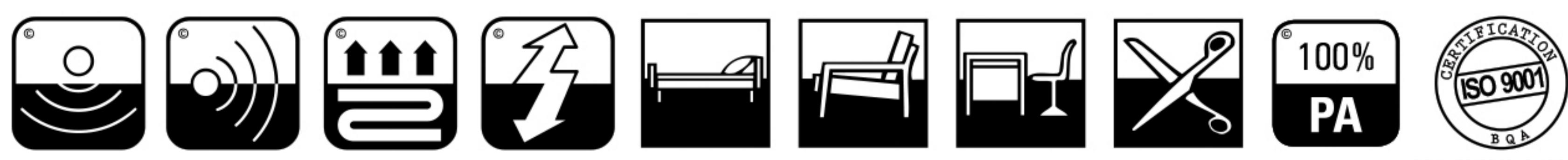
## lano carpets



Fabricagemethode Technique de fabrication Manufacturing process Herstellungsart Tecnica di fabbricazione	<b>tufted, 1/10" cut loop</b>	Poolsamenstelling Nature du velours Pile composition Polmaterial Composizione felpa	<b>PA</b>	Tuftdoek Premier dossier Primary backing Trägermaterial Tela di supporto	<b>non woven</b>	Rugtype Envers Secondary backing Rücken Sottofondo	<b>FBP</b>
Totale dikte Hauteur totale Total height Gesamthöhe Spessore totale	<b>± 10,0 mm</b>	Nuttige poolhoogte Hauteur de velours utile Effective pile height Tatsächliche Florhöhe Spessore felpa utile	<b>± 6,0 mm</b>	Breedte Largeur Width Breite Altezza	<b>± 400 cm</b>	Aantal noppen/m <sup>2</sup> Nombre de points/m <sup>2</sup> Number of knots/sqm Noppenzahl/m <sup>2</sup> Numero di punti/mq	<b>± 204880</b>
Poolinzetgewicht/m <sup>2</sup> Poids mis en oeuvre/m <sup>2</sup> Pile weight/sqm Poleinsatzgewicht/m <sup>2</sup> Peso felpa/mq	<b>± 1180 gr</b>	Totaal gewicht/m <sup>2</sup> Poids total/m <sup>2</sup> Total weight/sqm Poleinsatzgewicht/m <sup>2</sup> Peso felpa/mq	<b>± 2540 gr</b>	EN 13501-1 Brandgedrag Comportement au feu Fire behaviour Brennverhalten Reazione al fuoco	<b>B<sub>fl</sub>-s1</b>	EN 1307 Classificatie Classification Classification Klassifizierung Classificazione	<b>Class 23 Domestic Heavy Class 32 Commercial General</b>
ISO 140/8 Contactgeluidisolatie Isolation aux bruits d'impact Impact sound insulation Trittschallverbesserungsmaß Miglioramento acustico	<b>± 31 dB</b>	ISO 354 Geluidsdempingsvermogen $\alpha_s$ Absorption phonique $\alpha_s$ Sound absorption $\alpha_s$ Schallabsorptionsgrad $\alpha_s$ Grado d'assorbimento acustico $\alpha_s$	<b>± 0,32 1000 Hz</b>	ISO 11654 Geluidsdempingsvermogen $\alpha_w$ Absorption phonique $\alpha_w$ Sound absorption $\alpha_w$ Schallabsorptionsgrad $\alpha_w$ Grado d'assorbimento acustico $\alpha_w$	<b>± 0,35</b>	DIN 52612 Warmtedoorlaatweerstand Résistivité thermique Thermal retention Wärmedurchlaßwiderstand Resistenza termica	<b>± 0,147 m<sup>2</sup>/kW</b>
TOG rating	<b>± 1,47</b>	ISO 6356 2000 Teil 2: Permanent antistatisch Antistatique permanente Permanently antistatic Permanent antistatisch Antistatico permanente	<b>&lt; 2 kV</b>	ISO 6356 2000 Teil 6: Oppervlakteweerstand RoT Résistance horizontale RoT Surface resistance RoT Oberflächenwiderstand RoT Resistenza in superficie Rot	<b>≤ 10<sup>11</sup> Ω</b>	ISO 10965 1999 Teil 6: Doorgangsweerstand RdT Résistance transversale RdT Vertical resistance RdT Durchgangswiderstand RdT Resistenza ai passaggi RdT	<b>≤ 10<sup>10</sup> Ω</b>
ISO 105 B02 Lichtechtheid Solidité à la lumière Lightfastness Lichtechtheid Solidità colori alla luce	<b>≥ 5</b>	ISO 105 E01 Watrechtheid verkleuring Solidité à l'eau changement couleur Waterfastness change in colour Wasserechtheit Änderung der Farbe Solidità colori all'acqua cambio colore	<b>≥ 3-4</b>	ISO 105 E01 Watrechtheid uitbloeding Solidité à l'eau dégorgeement Waterfastness staining Wasserechtheit anbluten Solidità colori all'acqua sfumatura colore	<b>≥ 3-4</b>	ISO 105 X12 Wrijftechtheid droog Solidité au frottement sec Rubbingfastness dry Reibungechtheit trocken Solidità colori allo sfregamento a secco	<b>≥ 3-4</b>
ISO 105 X12 Wrijftechtheid nat Solidité au frottement humide Rubbingfastness wet Reibungechtheit nass Solidità colori allo sfregamento umido	<b>≥ 3</b>	Ce produit s'inscrit dans la démarche HQE (F.D.E.S. selon la norme NF P01-10 disponible sur demande). F.D.E.S. = fiche de données environnementales et sanitaires.	<b>HQE</b>	(±) These details are approximate. Complete specification details and associated certificates together with tolerances applying to the above can be provided upon request. We reserve the right to improve technical specifications without prior notice. Due to method of manufacture perfect pattern and/or colour matching cannot be guaranteed. In cut-pile carpeting, in rare cases, shading/pile reversal may occur without affecting its fitness for use. Shading/pile reversal can not be considered as a manufacturing or a material defect and will not affect the durability of the carpet. For other languages see: <a href="http://www.lano.com">www.lano.com</a>			



U<sub>3</sub>P<sub>3</sub>E<sub>1</sub>C<sub>0</sub> 11/279



BQA\_QMS019\_C\_199460